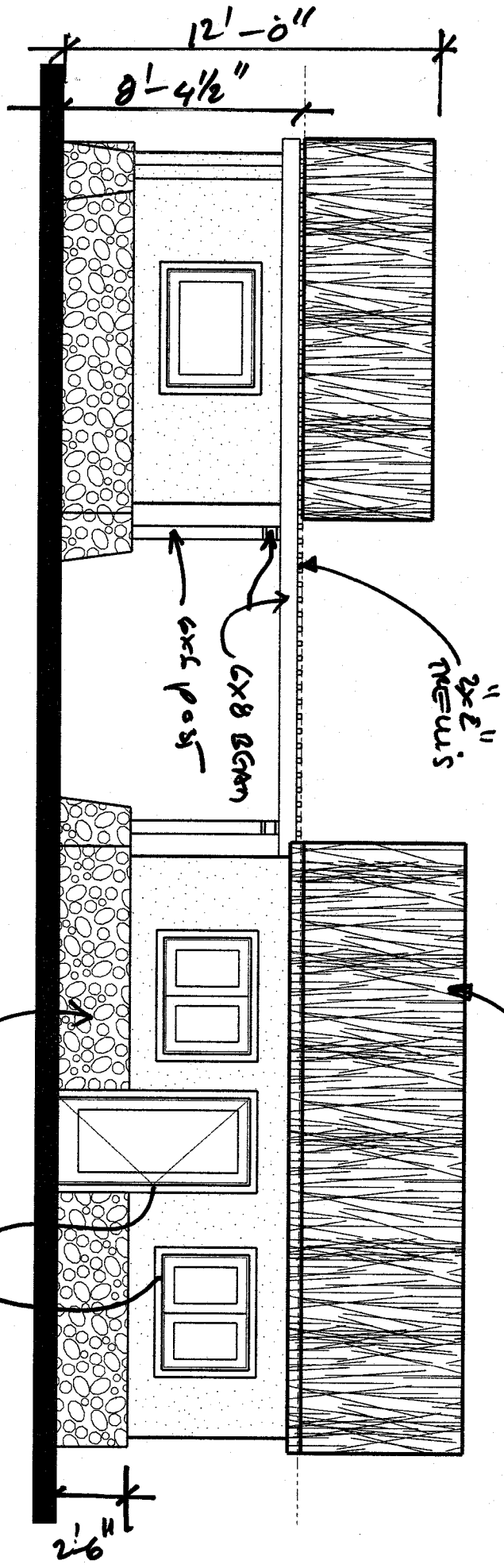


2x2 glass

UNIT STONE
W/MP @ 26"

FLORR PLAN
NBS

FRONT ELEVATION
NB



2x2" TRUSS

6x8 BGM
EXT. POST

WOOD GRAIN

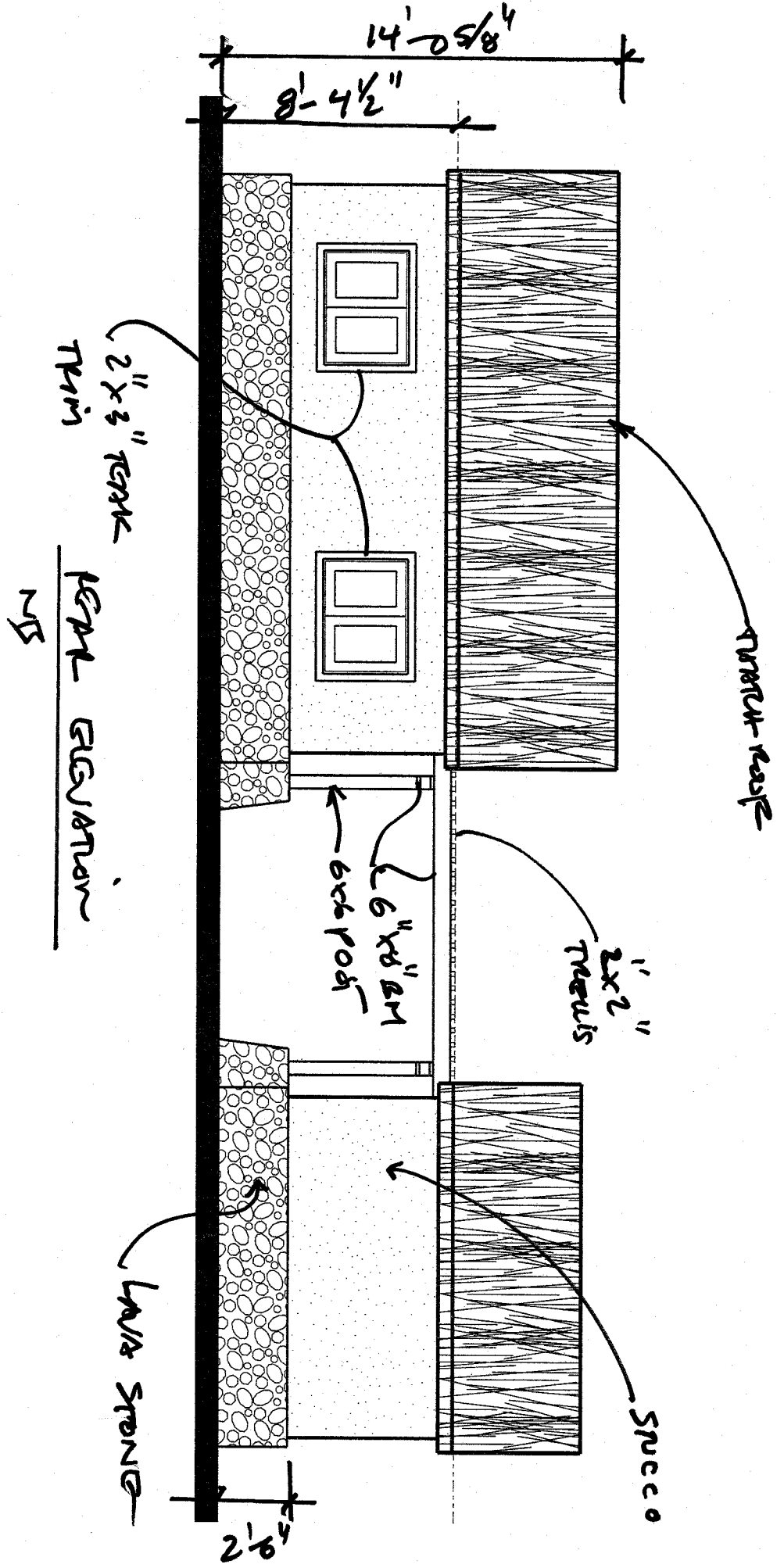
WOOD GRAIN

2x2" TRUSS

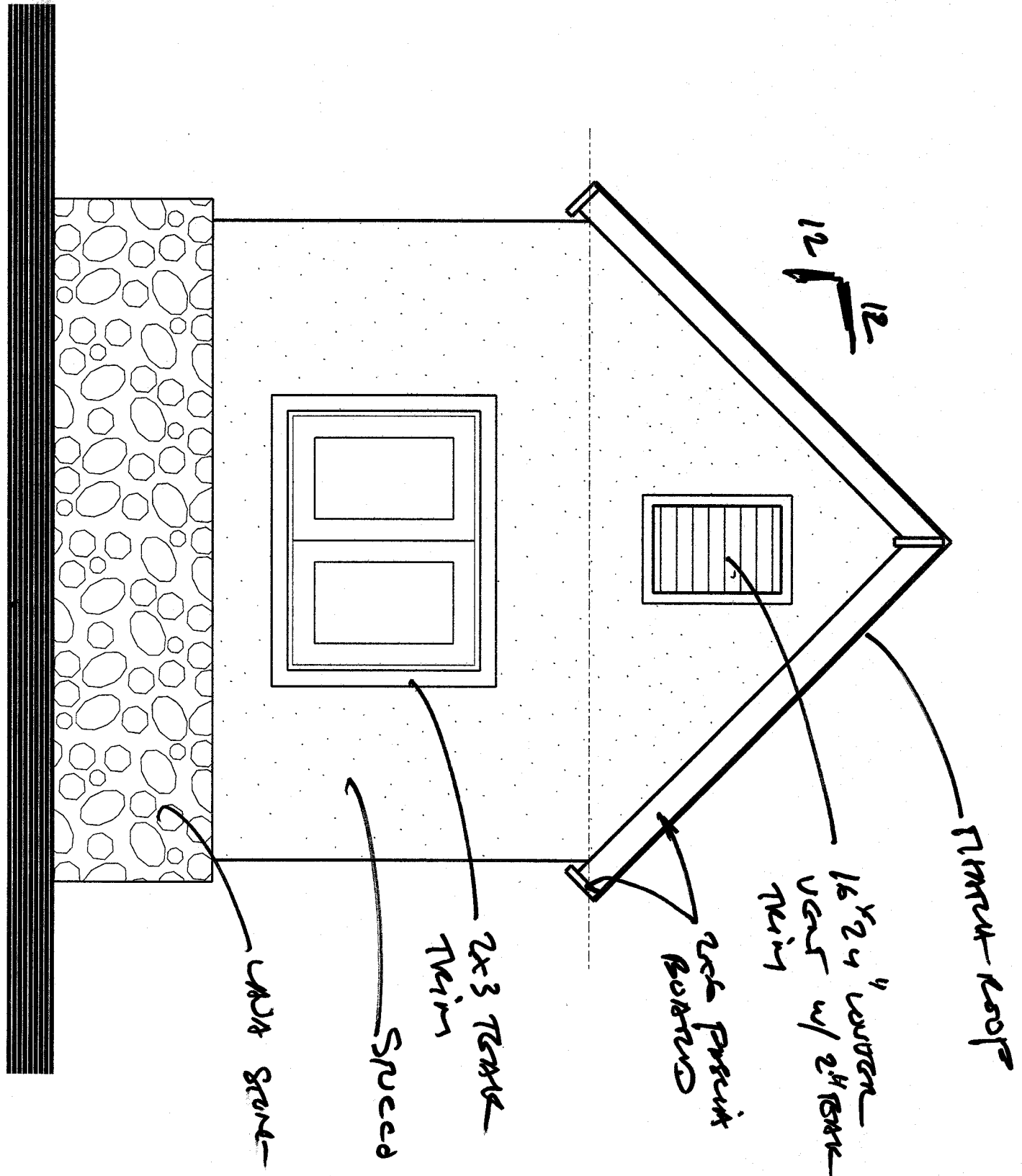
2'-6"

12'-0"

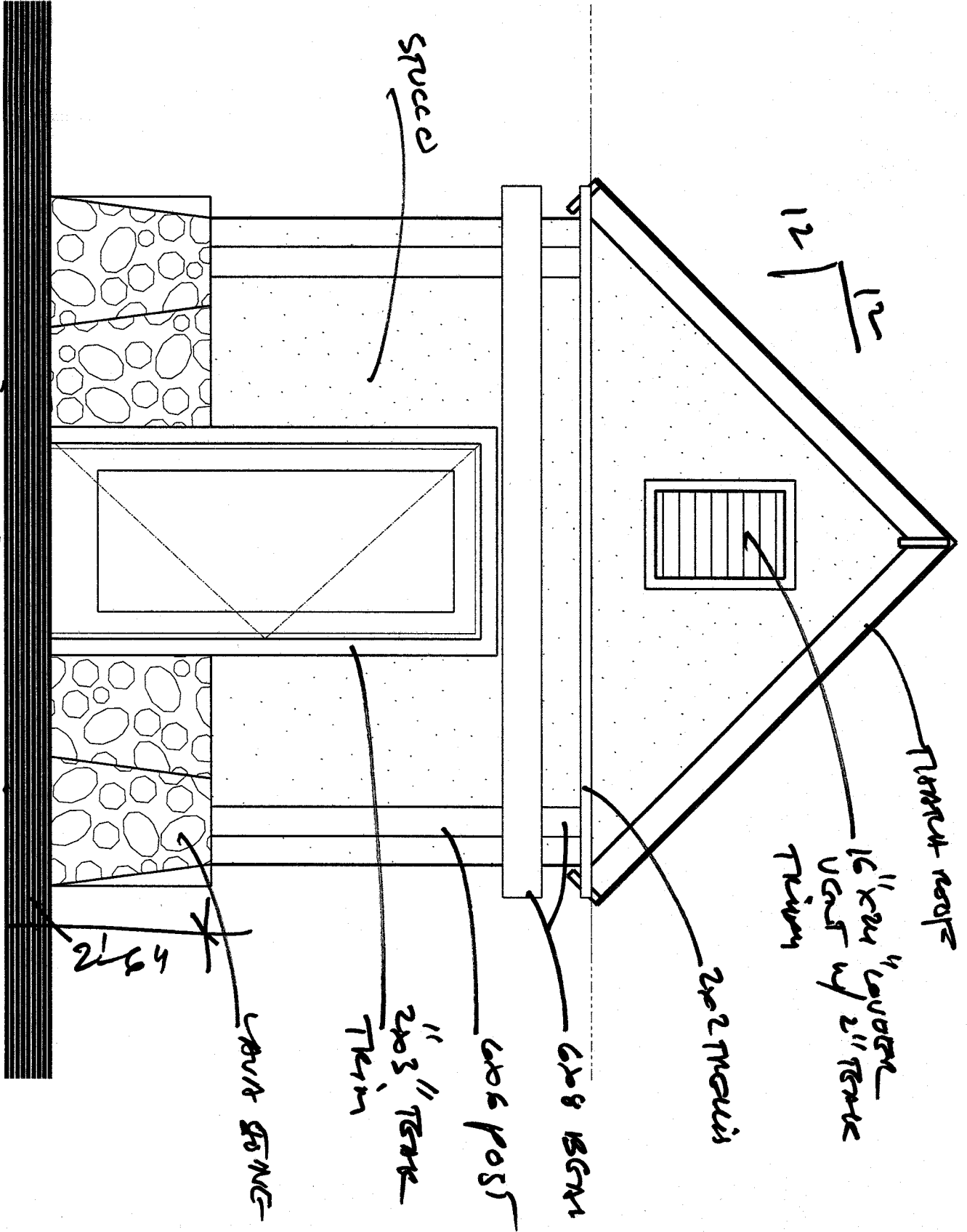
8'-4 1/2"



opposite elevation
NSF



Office side elevation
NTS



SPUCCO

12/12

PERMANENT ROOF

16' x 24' RAFTERS
16' x 24' UP 2" TRUSS TRIMMER

2x2 TRUSS

2x8 BGM

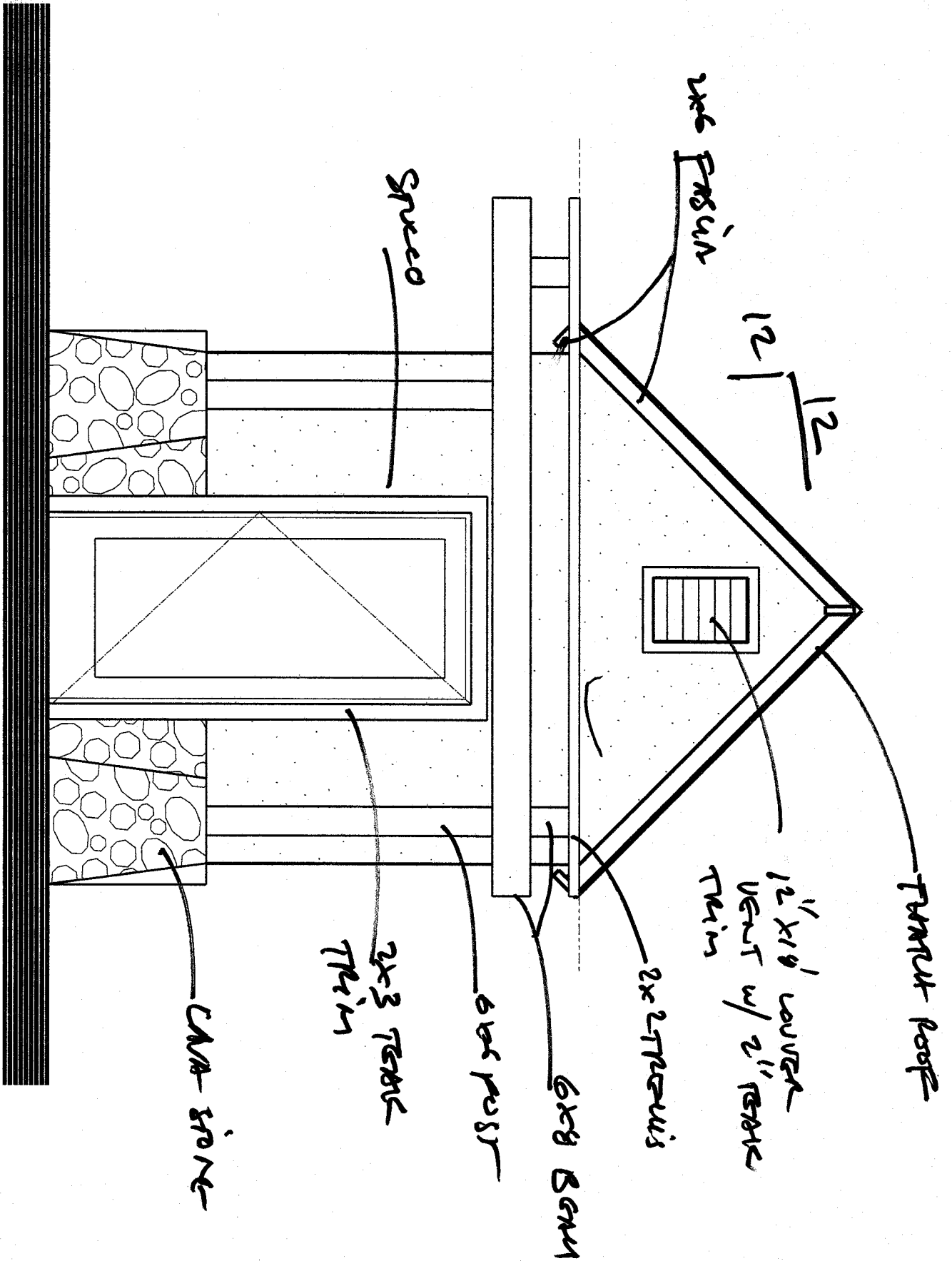
6x6 POST

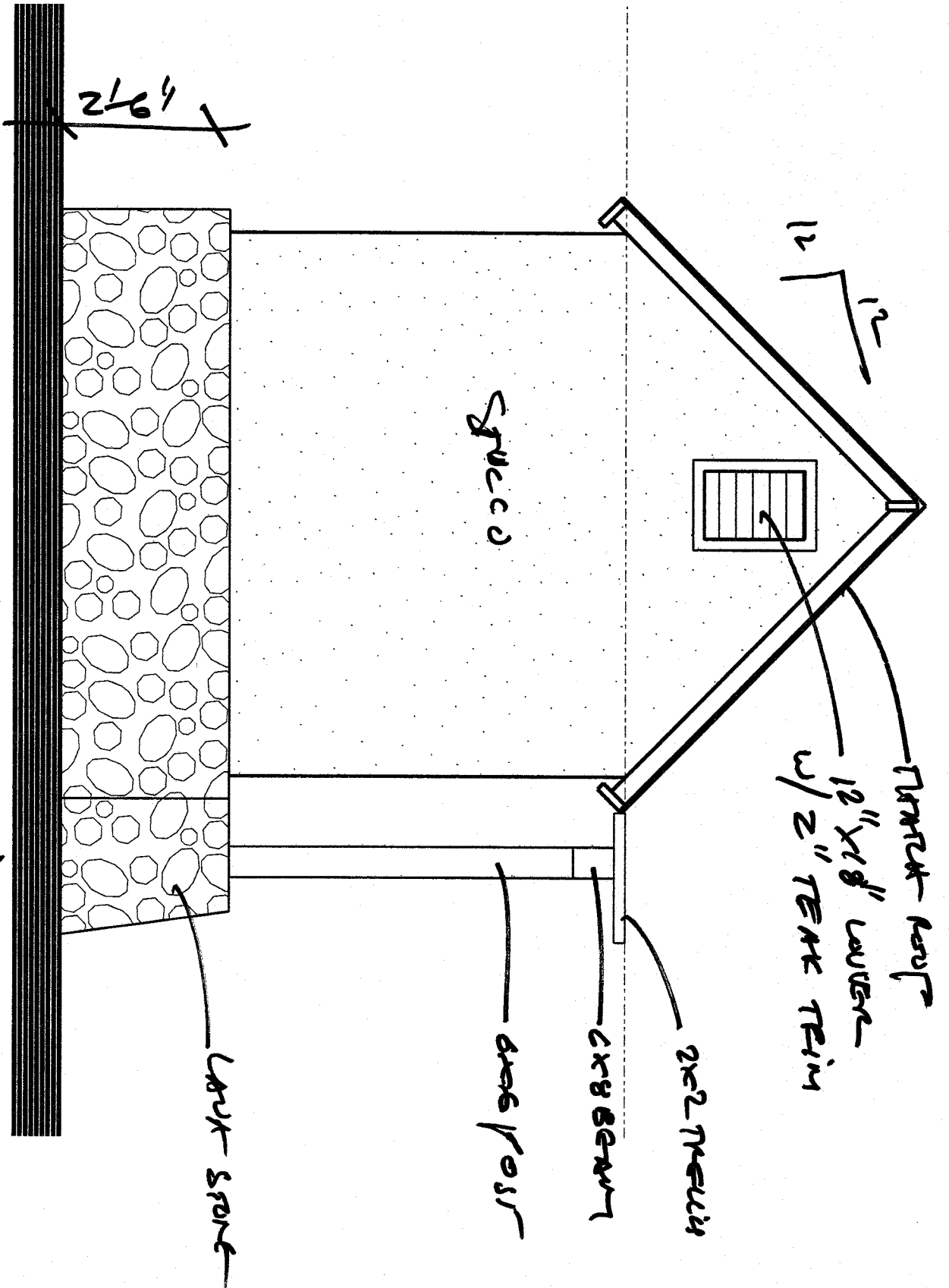
1" 2x3" TRUSS TRIMMER

CONCRETE

2' x 4' x 4'

RESTROOM SIDE ELEVATION
NTS





WESTERN SIDE ELEVATION
N/S