

REC'D OCT 11 2013

\*Landscape Notes:  
Existing citrus trees and ground cover to remain at each end of enclosure

two lime trees and ground cover to remain at this end.

Lemon tree & ground cover at this end

Roof will be constructed out of 2x4's and plywood with a torch down roof

Door will be a sliding door

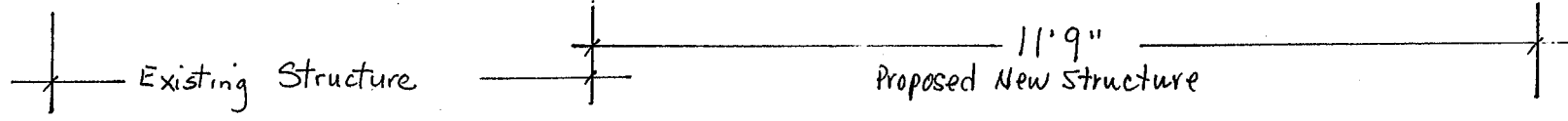
Exterior walls will be made out of concrete blocks and finished with a stucco matching the existing color of the house

76"

Existing Block Wall

RR tracks

(SIDE VIEW)



35507 Beach Road

TRASH ENCLOSURE	BRADY RESIDENCE	35507 BEACH ROAD	10-16-2013
-----------------	-----------------	------------------	------------