

Regional coordination, highlighting OC Parks' current efforts to address coastal erosion.

March 7, 2024

# South Orange County Coastal Resilience Strategic Plan



Marked as Confidential

1

## Summary/ Objectives



- A. Meet the deliverables of the **Prop 68 Work Plan** for the Ocean of Protection Council (OPC)
- B. Address chronically eroding shorelines through regional **shoreline management** in south Orange County
- C. **Assess, prioritize, and advance resiliency projects** for the region (resources are delivered to the areas most in need)
- A. Provide a **formal platform** for agencies to regularly discuss and coordinate coastal resiliency efforts

**Takeaway:** Establish a collaborative/coalition for South Orange County.

Marked as Confidential

2

# Benefits of Agency Collaboration



## Pool resources

- Permitting efficiencies and fiscal benefits
- Take advantage of funding and grant opportunities
- Delegate agency strengths



## Streamlining

- Don't double the work. Prioritize efforts in the most critical areas first to benefit the region.
- Reduces costs and competition for the same resources



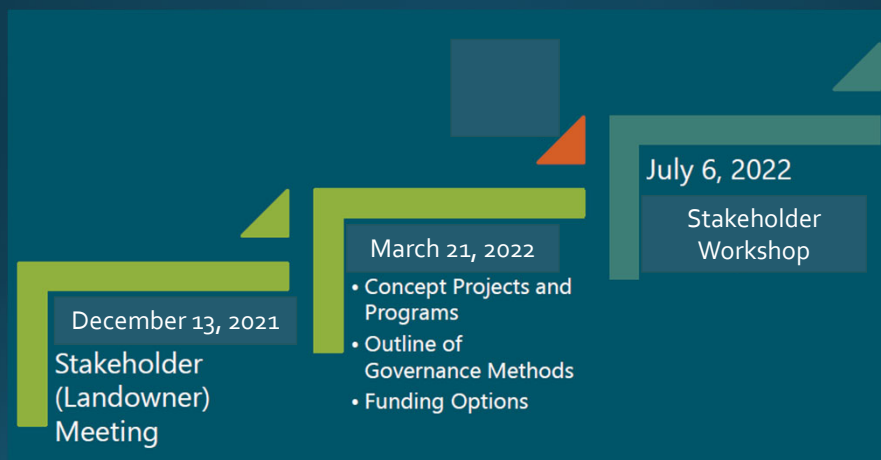
## Close the Gap

Close the Southern CA gap in coastal resiliency collaborative governance structures.

Marked as Confidential

3

# Stakeholder Engagement Overview



Marked as Confidential

4

## Collaborative Structure Analysis

---

MOA/MOU

---

JPA

---

County-Led Collaborative – Ad Hoc

---

USACE – co-sponsors

---

Consultant or Nonprofit-Led Collaborative

---

Business as Usual or Do-It-Along

---

Marked as Confidential

5

## Funding Opportunities

Regional Collaborative/Cost-Sharing Framework

Grant Funding

Impact Mitigation Fees

Geologic Hazard Abatement District

TOT or Sales Tax

Local Hazard Mitigation Planning and Pre-Disaster Assistance

Marked as Confidential

6

## Prioritization of Future Projects

1. Identify critical areas
  - Build upon existing monitoring programs
2. Sand nourishment
  - Identify sediment sources
  - Coordinate stockpile sites
  - Create a program for regular sand delivery
3. Implement sand nourishment projects
4. Sand retention and other approaches
5. Continue to monitor, study, and maintain



7

## Identify Critical Areas

Evaluation Criteria for Beach Condition Classifications

Parameter	Critical	Threatened	Stable
1. October 22 Beach Width	< 100 ft	100 to 150 ft	> 150 ft
2. Shoreline Change Trend (2001 to 2022)	Erosion Rate > 1 ft/yr	Erosion Rate < 1 ft/yr	Shoreline Stability/Accretion
3. Coastal Infrastructure Damage Risk	High	Medium	Low
4. Natural Resource Damage Risk	High	Medium	Low
5. Recreational Impacts	High	Medium	Low

Marked as Confidential

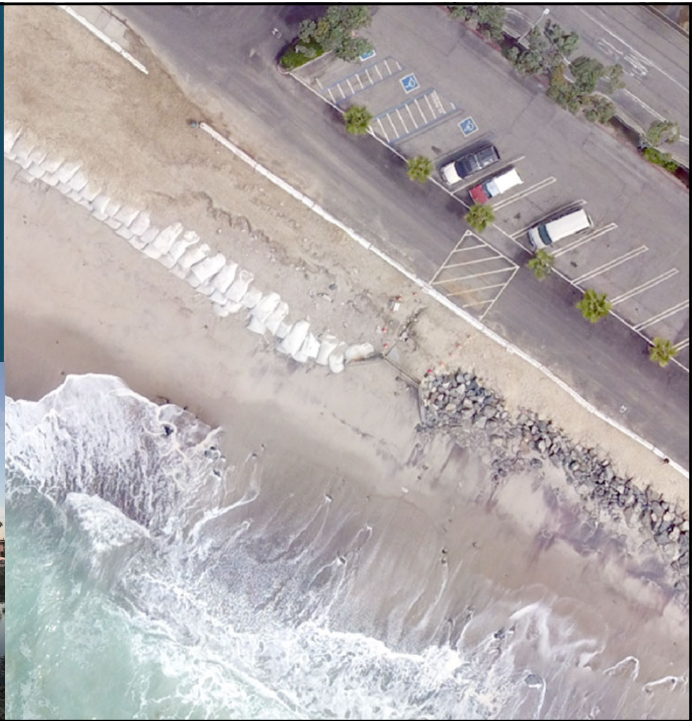
8

## Capistrano County Beach

### Master Plan

#### Shoreline Protection

- Sand-Filled Geotextile Bags
- Rock



9

## Capistrano County Beach/Doheny State Beach

### Beneficial Sand Re-Use

#### Sand Compatibility Use Guidelines (SCUG)

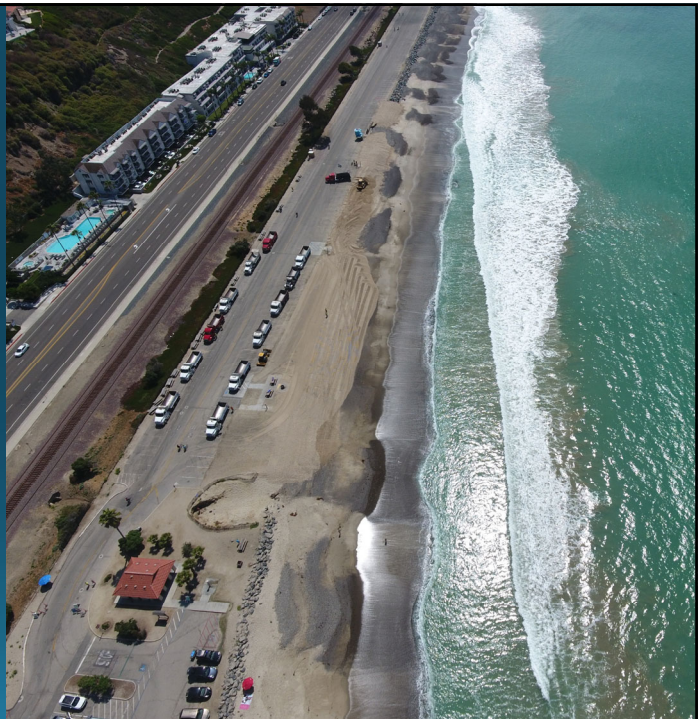
- Biological analysis
- Sand composition
- Chemical analysis

#### Permitting

- CDP waiver
- Emergency RGP notification USACE/ RWQCB

#### Monitoring

- Avian monitoring
- Grunion monitoring



Marked as Confidential

10

# Pilot Project

- Nature-based pilot project for living shoreline
- Cobble berm covered by native-vegetated dunes
- CDP authorization granted in November of 2022



Marked as Confidential

11

# Sand Compatibility and Opportunistic Use Program (SCOUP)

Lead Agency:

Orange County Public Works

Consultant:

Moffatt & Nichol

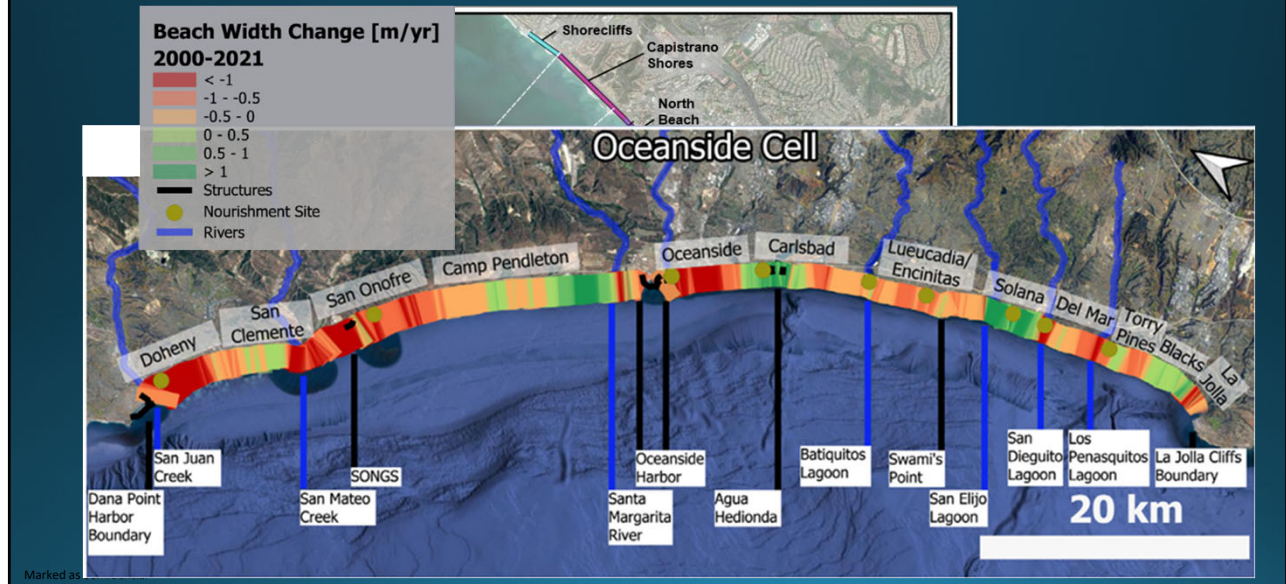
Status:

Draft in Review - 1 year

Marked as Confidential

12

# Monitor, Study and Maintain



13

**SANDAG**

2016/03/25

2016/03/25

## Regional Beach Sand Project III

Marked as Confidential

14



## Other Sand Partnerships and Grand Ideas

### OCWD

- SediMatch GIS application

### SCCWRP

- Ecological and social cost-benefit analysis

### OCTA rail delivery

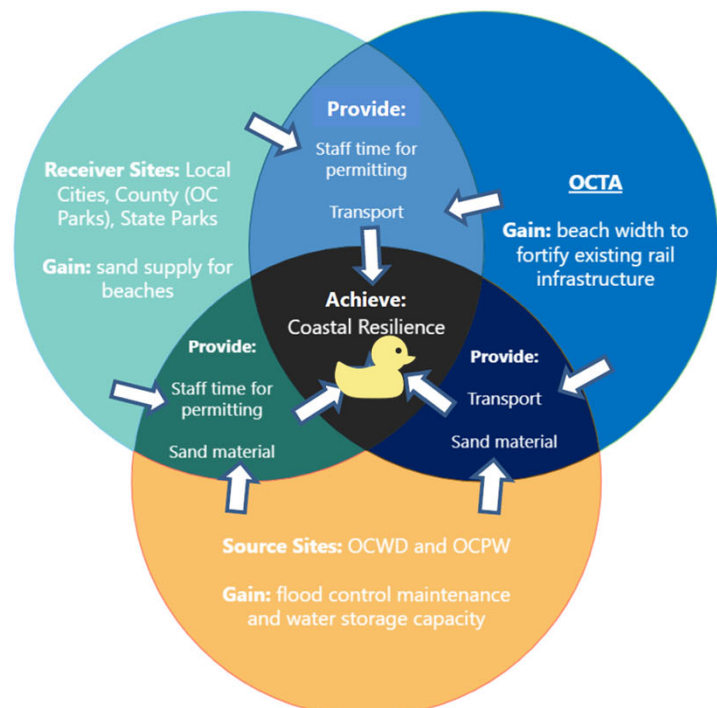
- Sidetrack
- Side dumping and heavy equipment
- Maintenance windows

Marked as Confidential

15

## Agency Collaboration

- Each agency is contributing something and gaining benefits
- All agencies are working together and contributing their specialties
- Working together toward a common goal (coastal resilience)



16



## Conclusions, Recommendations, and Next Steps

1. Form a regional collaborative (South County Beach Coalition)
2. Adopt a governance structure (MOU)
3. Prioritize future projects
4. Pursue funding opportunities
5. Implement projects



17

## For More Information:



Adam Gale, Senior Manager  
[agale@anchorqea.com](mailto:agale@anchorqea.com)

Delaney Inman,  
Environmental Scientist  
[dinman@anchorqea.com](mailto:dinman@anchorqea.com),  
909-802-0574



Leslea Meyerhoff, AICP, Principal  
Summit Environmental Group, Inc.  
[leslea.meyerhoff@att.net](mailto:leslea.meyerhoff@att.net), 760-845-  
8028



OCparks

Susan Brodeur,  
Senior Coastal Engineer, OC Parks  
[susan.brodeur@ocparks.com](mailto:susan.brodeur@ocparks.com)  
949-585-6448

Makana Nova, AICP  
Coastal Planning Manager, OC Parks  
[makana.nova@ocparks.com](mailto:makana.nova@ocparks.com)  
949-585-6441

Marked as Confidential

18